

The Women's Philanthropy Board and The Woman's Club of Auburn

PRESENT

# Our People - Our History - Our Hearts


FEATURING

## Barbara Dooley

### 2015 WPB Fall Luncheon

**Friday, November 13th**

The 2015 WPB Fall Luncheon is presented in partnership with the Woman's Club of Auburn in recognition of National Philanthropy Day which is held each year on November 15th.






Reservations available NOW!  
[www.carycenter.auburn.edu](http://www.carycenter.auburn.edu)

For more information about the Women's Philanthropy Board, including upcoming events and how to become involved, please contact the WPB Office at:

(334) 844-9156  
[www.carycenter.auburn.edu/wpb](http://www.carycenter.auburn.edu/wpb)

Or, connect with us on Facebook, Twitter, and Instagram.

# Women's Philanthropy Board

THE FLAGSHIP DIVISION OF THE CARY CENTER FOR THE ADVANCEMENT OF PHILANTHROPY AND NONPROFIT STUDIES

## 2014-2015 Annual Report



# Women's Philanthropy Board

Cary Center for the Advancement of Philanthropy and Nonprofit Studies  
 College of Human Sciences  
 210 Spidle Hall  
 Auburn, AL 36849-5601

THIS IS PHILANTHROPY.  
 THIS IS AUBURN.



## 2014-2015 WPB Annual Report



# 2014-2016 WPB Executive Committee

2014-2016

## WPB Executive Committee

### President

Charlotte Gaston  
(2013-2015)

### Vice President

Sandy Coaker

### Corporate Partners Committee

Leah Dubberly  
Dess Feick

### Events & Networking Committee

Brenda Dozier  
Teresa Johnston

### Finance Committee

Dover Currie  
Janie Gilliland

### Membership Committee

Celeste Dorman  
Joanne Schrantz  
Meri Thompson

### Mentoring Committee

Amelia Lanier  
Carol Warfield

### Scholarship & Recruiting Committee

Stacy Brown  
Beverly Farrington  
June Manor

### At-Large Representatives

Beth Stukes, Visionary  
Sandi Aplin, Legacy  
Oline Price, Benefactor  
Beth Whitten, Benefactor  
Mike Reynolds, The Phils  
Kim Parker, Associate  
Stephanie Treadwell, Associate  
Nonet Reese, Business Partner

### Presidents Emerita

Sue Groce (2011-2013)  
Margaret Bentley (2009-2011)  
Sally Jones Hill (2007-2009)  
Darlene Woodall (2004-2007)  
Sandy Logan  
(Founding President 2002-2004)

### College Leadership and WPB Staff

June Henton, Dean

(Liaison to President and Vice President)

Sid James Nakhjavan, Executive Director  
(Liaison to At-Large Representatives)

Kim Walker, Program Director  
(Liaison to Events & Networking, Mentoring, and  
Scholarship & Recruiting Committees)

Samantha Allbrook, Operations Manager  
(Liaison to Finance Committee)

Kim McCurdy, Development Officer  
(Liaison to Corporate Partner and  
Membership Committees)

## Dear Women's Philanthropy Board Donors:

Thank you for your support of the Women's Philanthropy Board and its 2014-2015 programs. We are pleased to provide you with the WPB Annual Report, a snapshot of WPB's educational events, mentoring initiatives, and philanthropic impact during this past academic year.

Because of your support, WPB reached an important milestone this year in its mission to support people and programs in the College of Human Sciences. Since its inception, WPB has now provided more than \$500,000 in student scholarships, faculty awards, and grants in support of projects and programs in the College. This is a remarkable accomplishment for the organization and one of which all of WPB's donors should be proud.

We are also proud of WPB's newest mentoring and donor initiatives. In the summer of 2014, WPB launched a new mentoring program, the Student Philanthropy Board, its new men's auxiliary, The Phils, and the WPB Business Partner giving level. All of these new initiatives have been wonderful opportunities for WPB to expand its efforts and reach into the community, Auburn University, and beyond.

Your investment in WPB and its programs is allowing Auburn University, the College of Human Sciences, and the Cary Center for the Advancement of Philanthropy and Nonprofit Studies to provide impactful programs in philanthropic engagement and financial sustainability.

Sincerely,

*Charlotte Gaston*

Charlotte Gaston  
WPB President 2013-2015

*Sidney James Nakhjavan*

Sidney James Nakhjavan  
Drummond Thorne Stukes Executive Director  
Cary Center for the Advancement of Philanthropy and Nonprofit Studies  
& Women's Philanthropy Board



Six WPB Presidents were present during the 13th Annual WPB Spring Symposium and Luncheon: Sandy Coaker (2015-2017), Sue Groce (2011-2013), Margaret Bentley (2009-2011), Charlotte Gaston (2013-2015), Darlene Woodall (2004-2007), and Sally Jones Hill (2007-2009). (Not pictured – Sandy Logan, Founding President.)

WPB Corporate Partners show their commitment to the educational, mentoring, and philanthropic mission of WPB by affiliating with the organization as a Corporate Partner. These generous companies provide a minimum \$5,000 annual gift which helps to underwrite WPB's efforts in providing high-quality educational programs, dynamic mentoring initiatives, and impactful philanthropic scholarship and grant opportunities.

## Women's Philanthropy Board CORPORATE PARTNERS

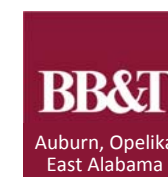


BlueCross BlueShield  
of Alabama



Valorum Wealth Management  
4001 Carmichael Road, Suite 400  
Montgomery, AL 36106  
334-244-2121

## Women's Philanthropy Board BUSINESS PARTNERS



WPB Business Partners represent individually or family-owned businesses and partnerships that seek to support the work of WPB. These partners join other like-minded businesses in providing support to WPB by giving a minimum \$4,500 gift over a three-year period (\$1,500 annually).



Visionary

Barbara Anderson  
Susan Gubert  
Betty McWhorter  
Beth Thorne Stukes

Legacy

Sandi Aplin  
Kristy Myers  
Mike & Leann Rowe

Benefactor

Jacque Adair  
Claire Andrews  
Brenda Aughtman  
Judy Baker  
Gana Barrentine  
Alice Bell  
Margaret Bentley  
Winnie Boyd  
Marilyn Bradbard  
Deborah Bright  
Linda Brock  
Cathy Brown  
Stacy Brown  
Jackie Bryars  
Betty Buford  
Ginger Burkett  
Debbie Caldwell  
Becky Carroll  
Betty Carroll  
Beth Casey  
Judy Chase  
Sandy Coaker  
Alicia Conn  
Julie Cook  
Lil Cross  
Catherine Crowder  
Dover Currie  
Alesia Davenport  
Jane Dennis  
Frances Dillard  
Celeste Dorman  
Carol Dorn  
Brenda Dozier  
Linda Drummond  
Judy Ekiss  
Jan Ellis

Beverly Farrington  
Dess Feick  
Sandra Forsythe  
Carolyn Gibson  
Harriet Giles  
Janie Gilliland  
Sandy Glasscock  
Ann Gresham  
Gari Griffin  
Sue Groce  
Andrea Hardwick  
Dee Dee Harper  
Jane Harper  
Kay Harris  
June Henton  
Sally Jones Hill  
Ellen Holladay  
Anna Hovey  
Peggy Hsieh  
Susan Hubbard  
Ashley James  
Dora James  
Teresa Johnston  
Mariann Jungnickel  
Jennifer Kerpelman  
Cindy Kinnebrew  
Laura Kirkpatrick  
Jane Knight  
Beverly Kruger  
Amelia Lanier  
Paula Lansdon  
Suzanne Laws  
Elizabeth Lester  
Sandy Logan  
Conner Lowry  
Terri Lyon  
June Manor  
Michelle Mason  
Andrea McCain  
Kim McCurdy  
Frances Moore  
Jane Moore  
Jill Muir  
Kristy Myers  
Sidney James Nakhjavan  
Anna Neville  
Patricia Norris

Pam O'Brien  
Lynn Parker  
Christina Pick  
Stephanie Pollard  
Kathy Powell  
Oline Price  
Meri Thompson Pylant  
Robin Reynolds  
Caroline Ristad  
Kerri Sauer  
Lane Sauser  
Nicole Schiegg  
Joanne Schrantz  
Mamie Sellers  
Karen Sharpless  
Jenny Short  
Pam Singley  
Nancy Smith  
Linda Stone  
Maggie Thompson  
Martha Thompson  
Madonna Timmermeyer  
Dixie Torbert  
Gene Torbert  
Karyn Uptain  
Kim Walker  
Carol Warfield  
Carol Waters  
Anne Welch  
Pamela Wellborn  
Gina Whatley  
Pat Wingfield  
Beth Witten  
Sieu Tang Wood  
Darlene Woodall  
Eugenia Zallen

The Phils

William Allbrook  
Charus Campbell  
Bill Capps  
Christopher Davis  
William Dillard  
Barry Dorman  
Chris Dubberly  
Steve Ellis  
Bill Gaston  
Johnny Green  
Robert Harris  
Jalyn Henton  
Jay Jacobs  
Fred Kam  
Tim Kirkpatrick  
Don Logan  
Mac Lowry  
Elliott MacIsaac  
Earlon McWhorter  
Charles Pick  
Joel Pittard  
Ken Pylant, III  
Mike Reynolds  
Mike Stover  
Rick Stukes  
Coley Trant  
Todd Trawick  
Brent Uptain  
Hans van der Reijden  
Greg Williams

Associate

Samantha Allbrook  
Katie Brannen  
Katherine Buck  
Skylar Cope  
Whitney Griswold  
Liz Macnab  
Joice Milare  
Kimberley Parker  
Lauren Reynolds  
Kelly Schenck  
Stephanie Treadwell  
Louisa Wood

Phil Jrs.

Will Faulkner  
Arian Nakhjavan  
Painter Sharpless  
Matthew Tse

Charlotte Gaston recognized as WPB's outgoing president

Charlotte Gaston was recognized during the 13th Annual WPB Spring Symposium for her service as president of WPB for the 2013-2015 term. Charlotte has served on the WPB Events and Networking Committee, the WPB Scholarship and Recruiting Committee, and as Vice President. She has been a steadfast supporter of WPB - sharing her time, talents, and treasure and as a WPB Corporate Partner through her business, Charlotte Gaston Interiors.



Thank you Charlotte for your leadership in WPB!

Mike and Leann Rowe establish first named WPB endowed professorship



Mike and Leanne Rowe, WPB Legacy Donors, have established the first, named endowed professorship in the College of Human Sciences that also carries the Women's Philanthropy Board name.

This endowment will support a superior faculty member in the college who is a full-time tenure track professor and demonstrates a strong commitment to students and the provision of high quality instruction, research, and outreach.

Special thanks to Mike and Leann Rowe for their gift in support of the Mike and Leann Rowe - Women's Philanthropy Board Endowed Professorship in International Studies.

The Women's Philanthropy Board Distinguished Speakers Fund

The Women's Philanthropy Board Distinguished Speakers Fund was established in 2014 with initial funding provided by a generous gift from the Alabama Power Foundation and Alabama Power Company.

The WPB Distinguished Speakers Fund supports the organization's efforts to feature prominent speakers at its educational programs. These speakers are recognized for their expertise and leadership in the fields of finance, wealth management, estate planning, entrepreneurship, economics, healthcare, mentoring, nonprofit leadership, and philanthropy.

WPB seeks to provide nationally and internationally known speakers at its programs in order to:

- Provide high-quality and relevant educational opportunities for its constituents, Auburn University students, faculty, staff, and the community at large.
- Bring heightened awareness to the mission of the WPB to both internal and external stakeholders of the University.
- Attract larger and more diverse audiences to its programs.
- Broaden the base of financial support to WPB and its educational, mentoring, and philanthropic initiatives.

Gifts to the Women's Philanthropy Board Distinguished Speakers Fund are made through the Auburn University Foundation. Opportunities for event title sponsorships are available through gifts to this fund. Please contact Kim McCurdy at (334)844-9173 for more information.

Special thanks to Alabama Power and Alabama Power Foundation for their generous support of WPB's 2014-2015 educational programs



Why I support WPB?

By Katherine Buck  
WPB Associate Donor

"I joined Women's Philanthropy Board because I can see the instant impact it is making in the lives of Auburn students. WPB provides awesome mentoring programs and scholarships that students can benefit from, and the Board hosts educational programs that are relevant to both current students, members of the Board, and the community year-round. I have met so many wonderful Auburn men and women through WPB, and I know the work they are doing is changing Auburn and its students for the better!"



Each year, as part of its mission to financially support the College of Human Sciences, WPB practices philanthropy as an organization by providing funding to student scholarships and programmatic grants. A review of the 2015 WPB scholarships and grants is listed below. Additional scholarships will be awarded in Fall 2015 through the College of Human Sciences scholarship endowments that are awarded through the Women’s Philanthropy Board.

### WPB Annual Scholarship Recipients

**Kaitlyn Schloder** Dothan, Alabama

Major: Human Development and Family Studies

Kaitlyn is passionate about caring for children and helping others. Since starting Auburn University, Kaitlyn has been an afternoon teacher at Creative Discovery, where she provides care for 6-12 month old children. She also has experience as a nursery worker and camp counselor. Kaitlyn has excelled academically at Auburn University, being recognized on the Dean’s List for 2014 and being selected for membership in the National Society of Leadership and Success.

**Alana Dillette** Freeport, Bahamas

Major: Hotel and Restaurant Management

Originally from the Bahamas, Alana first came to Auburn in 2005 to join the Swimming and Diving Team, a passion that led to her participation in the 2008 Beijing Olympics on behalf of the Bahamas. Alana is a dedicated aspiring industry professional, excelling in her research while earning invaluable teaching and industry experience. These experiences include working as a Food & Beverage Administrator for The World, Residences at Sea; working as an Event Planner at The Alabama Governor’s Mansion; and working with Lynn Huggins Event Planning. Alana’s professional goals are to inspire and empower lasting solutions in the tourism field through creative research, teaching, and mentorship.

**Alyson Shewbart** Meridianville, Alabama

Major: Nutrition - Dietetics

Alyson is very involved in the Auburn community, where she serves as an Oaks Retreat Counselor and helps with The College Kids Tailgate. She also participates in the Inner-city Kids Bible Study program and currently works part-time for the Auburn Athletics Department. Following her dreams of becoming a Registered Dietitian, Alyson also participates in Hunger Studies research and volunteers at the Community Market.

### WPB Endowed Scholarship Recipient

**Jolie Blythe** Alexander City, Alabama

Major: Apparel Merchandising, Design, and Production Management (Design Option)

Jolie has a sound history of academic excellence, graduating high school with an Advanced Diploma with honors, as well as being inducted to the National Honor Society. Jolie aspires to become a leading professional in the apparel industry, and she is currently working as a Sales Associate at JC Penney’s. She also has experience working at In-Stitches Embroidery, a children’s clothing designer. Jolie enjoys volunteering at the local food pantry, and is involved in various church activities, including teaching Vacation Bible School.



Pictured are the 2015 WPB Scholarship recipients and June Manor, Co-Chair of the WPB Scholarship & Networking Committee. From left to right: Alana Dillette, Jolie Blythe, June Manor, Alyson Shewbart, Kaitlyn Schloder

### WPB Philanthropic Impact Grants

**Undergraduate Peer Advising Program**  
**\$2,500 Presented to Susan Hubbard and Kim Parker**

Grant will provide funding to support student peer advisors who will be assisting professional academic advisors during peak registration and advising periods for approximately 1,200 students in the College of Human Sciences.

**Dress and Dine For Success Etiquette Dinner**  
**\$1,450 Presented to Susan Hubbard and Kelly Martin**

Grant will provide support for 30 CHS students to attend an etiquette dinner where they will learn more about presenting themselves in a professional manner at job interviews and in the corporate environment.

**Family & Consumer Sciences High School Teacher Workshop**  
**\$750 Presented to Susan Hubbard and Kelly Martin**

Grant will provide support for a professional development workshop for Alabama high school Family and Consumer Sciences programs. The workshop will introduce teachers to programs in the College of Human Sciences and career paths through CHS majors.

**Alabama Prison Arts + Education Leadership Grant**  
**\$500 Presented to Kyes Stevens**



Grant will support the Alabama Prison Arts + Education Project, an outreach initiative based in the College of Human Sciences dedicated to bringing educational opportunities to prisoners in Alabama. The program is helping the adult prison population to gain a quality education, and also to build a relationship with learning that will continue to grow for the rest of their lives.

## Student Spotlight ... COLE LEONARD



A native of Dacula, Georgia, Cole Leonard is one of four children and is the first in his family of Gator and Bulldog fans to attend Auburn University. When asked why he chose Auburn over the Universities of Georgia and Florida, he simply said, “It felt like home.” Cole originally planned to attend law school, but ultimately chose to major in Public Administration and minor in Philanthropy and Nonprofit Studies. Cole plans to attend graduate school at Auburn in 2016 and ultimately wants to work in higher education.

While a student at Auburn, Cole held volunteer leadership roles in several organizations, including serving as the inaugural president of the Student Philanthropy Board, a mentoring initiative of WPB. He was on the executive board of the Committee of 19, a student organization promoting hunger awareness on the Auburn campus and in the community. In February 2015, he was one of 16 students chosen to represent Auburn at the Universities Fighting World Hunger Summit at the University of Guelph, outside Toronto, Canada. Cole was also active in his fraternity, Phi Kappa Psi, and served as chair for the fraternity’s alumni programs, as well as social and recruitment committees.

“I was honored to serve as the first president of the Student Philanthropy Board and am thankful for WPB’s support of the organization. I enjoyed helping lay the groundwork for the group and, hopefully, SPB will continue to grow and prosper in the future. It is a wonderful way for students to put into practice what they have learned in their courses in the Philanthropy and Nonprofit Studies minor,” said Leonard.

As a WPB Mentee and part-time student worker for the Cary Center, Cole attended multiple WPB educational programs. “I was very inspired by Kendall and Celesta Simmons at this year’s WPB Fall Luncheon,” said Cole. “Their passion for philanthropic work really showed through in their presentation. Their generosity and positive attitude definitely serves as models for their kids and the community.”

Cole credits his parents for inspiring his desire to help others. “Because of my parents’ support, I was able to attend Auburn University. Auburn provided me an outstanding education and wonderful experiences. I’m ready to enter this next phase of my life and to make an impact on the community in which I will live both as a professional and a philanthropist.”

## CHS Alumna, Kim McCurdy, Named Associate Development Officer

Kim McCurdy, a College of Human Sciences graduate, has been named as the College’s newest associate development officer. Kim has worked in development at Auburn University for almost four years and has a strong knowledge base and the relationships needed to be successful in her new role. Kim will be responsible for fundraising efforts in the College with an emphasis on Cary Center programs including: Women’s Philanthropy Board, Camp iCare®, REAL Cents REAL Change®, Volunteers in Philanthropy, Art of Philanthropy, and Community Knowledge 360. She will also solicit support on behalf of students and faculty associated with the minor in Philanthropy and Nonprofit Studies. Kim can be reached at (334) 844-9173 or kcm0021@auburn.edu.



## PROJECT 30 UNDER 30

WPB held a “30 Under 30” networking event in April 2015 to kick-off a year-long effort to engage young professionals in the mission and work of the Women’s Philanthropy Board. Attendees participated in a “Trivia Night” competition with questions covering topics such as Auburn University history and financial literacy.

WPB has a goal to reach 30 WPB members in the Associate and Phil Jr. giving levels. WPB Associates and Phil Jr. donors must be age 30 or younger and provide a five year pledge to support WPB through an annual minimum \$500 gift. Please see a list of WPB’s current Associate and Phil Jr. donors later in this report. If you know of someone who may be interested in helping WPB reach this goal, please contact Kim McCurdy at (334) 844-9173.







# THE PHILS

## The Men's Auxiliary of the Women's Philanthropy Board

Known as The Phils, the WPB men's auxiliary was established in the summer of 2014 as a way for men to affiliate with and support the mission of the Women's Philanthropy Board as it strives to educate and enable individuals to become financially sustainable and philanthropically engaged. The Phils are husbands, fathers, brothers, sons, and friends, representing a variety of backgrounds and experiences. They are philanthropic leaders and mentors, dedicated to investing in the women in their lives.

Phils pledge a minimum of \$1,000 per year for five years, while Phil Jrs. (available to men age 30 and younger) pledge a minimum of \$500 per year for five years.

## The 2015 Phils Calendar

The establishment of a men's auxiliary of a women's philanthropic organization is quite unique. In fact, it is believed that The Phils is the first of its kind. As WPB was contemplating how to launch this initiative, it was decided that a calendar featuring some of its first members would be a memorable way to showcase these philanthropists. Some men embraced the idea with open arms; others were coaxed into it by some very persuasive women. In the end, all these men were willing to give of their time and resources to help WPB launch The Phils. The calendar is a testament to their lives and the mission of WPB. The 2015 calendar was sold during the fall with all proceeds benefiting WPB mentoring initiatives.

Each philanthropist featured in the calendar provided a quote for the calendar about why it was important for him to join the Phils.

## The Future of The Phils

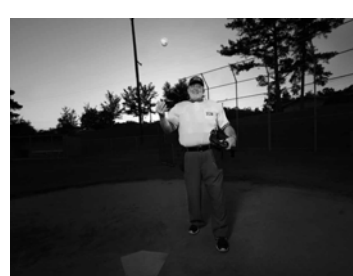
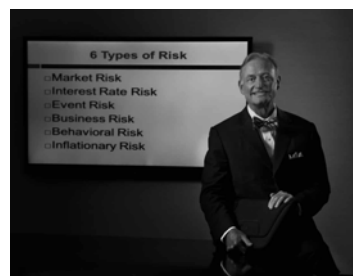
Since its inception last year, the number of "Phils" has grown to now include 33 men who have joined in support of the educational, mentoring, and philanthropic efforts of WPB. The 2016 Phils calendar will be in production this summer and the 2015 WPB Auburn Football Illustrated advertisement featuring The Phils can be seen at a home football game this fall.

Please see a listing of members of The Phils in this annual report. These men will represent the Founding Members of The Phils since all pledged their support during the first year of the organization's launch.



Photo to left: Photo of The Phils used in the 2014 WPB Auburn Football Illustrated Advertisement.

Surrounding photos: Photos featured in the 2015 Phils calendar.



## Fostering Experiential Learning for Merchandising Students \$2,000 Presented to Sandra Forsythe and Carol Warfield

Grant will provide two \$1,000 need-based scholarships for two students in Dr. Sandra Forsythe's Advanced Buying class to participate in a weeklong class trip to New York City. Students will spend the week shadowing experienced buyers and attending seminars led by industry executives.

## REAL Cents REAL Change Residential Camp Scholarship \$600 Presented to Lauren Reynolds

Grant will provide one scholarship covering tuition costs for a needs-based youth to attend the REAL Cents REAL Change Residential Summer Camp. The camp, hosted by the Cary Center for the Advancement of Philanthropy and Nonprofit Studies, teaches teen participants about the basic skills of financial management and how to maximize their philanthropic impact.

## Tablet Technology for Service Projects in the Design Curriculum \$2,000 Presented to Paula Peek and Carol Warfield

Grant will assist with the purchase of cutting-edge mobile technology to carry out design plans for service learning projects throughout the Auburn/Opelika community for Consumer and Design Sciences students.

## CHS Undergraduate Research Fellowship Program \$2,000 Presented to Jennifer Kerpelman



Grant will provide funding to support an undergraduate research fellow in the Auburn University Undergraduate Research Fellowship Program. This program, under the guidance of Dr. Jennifer Kerpelman, is designed to facilitate opportunities for students to engage in research and scholarship.

## Summer STEM Research Experience Undergraduate Stipend \$500 Presented to Kate Thornton and Jessica Adams



Grant will provide a stipend to Jessica Adams, a junior majoring in Microbiology and minoring in Hunger Studies. This stipend will assist Jessica as she works with a premier researcher at Penn State University in her study of Vitamin A deficiency as a cause of preventable blindness in children.

## Women's Philanthropy Board- June Henton Vision Fund \$3,000 Presented to June Henton



Grant will provide seed money for the establishment of a fund for excellence in support of strategic priorities as determined by the Dean. This fund will provide the Dean with opportunities to address needs as they arise in the College of Human Sciences such as technology, staffing, student support, alumni and development, communications and marketing, and faculty/staff professional development.

# WPB's Philanthropic Impact

In 2015, WPB crossed an important threshold in its cumulative philanthropic impact. Since its 2002 inception, WPB has provided more than \$500,000 in scholarships, faculty awards, and programmatic grants in support of students, faculty, staff, and programs in the College of Human Sciences.

# \$500,000

## College of Human Sciences Endowments through the Women's Philanthropy Board

Women's Philanthropy Board Endowed Scholarship  
Brannen Family - Women's Philanthropy Board Endowed Scholarship

Chicken Salad Chick - Women's Philanthropy Board Endowed Scholarship in  
Hotel and Restaurant Management

Dora Hanson James - Women's Philanthropy Board Endowed Scholarship

Larson-Peterson Memorial - Women's Philanthropy Board Endowed Scholarship in  
Consumer and Design Sciences

Lillie Bell Lombardo, Mary Charles Davis, Ava Cross Lombardo - Women's Philanthropy Board Endowed Scholarship

Arlene Rushing Lowe - Women's Philanthropy Board Endowed Scholarship in Consumer and Design Sciences

Callie Stone Nash - Women's Philanthropy Board Endowed Scholarship

Mike and Leann Rowe - Women's Philanthropy Board Endowed Professorship in International Studies

Darlene Fletcher Woodall - Women's Philanthropy Board Fund for Excellence for Student Career and Professional Development



# Student Philanthropy Board

Established 2014

The Student Philanthropy Board is a pre-professional student organization designed to support students who are seeking a minor in Philanthropy and Nonprofit Studies. Participation in the Student Philanthropy Board provides avenues for students to explore philanthropic engagement, nonprofit leadership, financial sustainability, community involvement, and professional development. The knowledge and skills gained through SPB participation will prepare students for future service as nonprofit professionals, nonprofit volunteers, or philanthropists.

Throughout the academic year, SPB members learned from guest speakers and by participating in outreach activities. During the fall semester SPB hosted guest speaker, Rene Richard Waldrop, an attorney and co-founder of the By Our Love Foundation, a nonprofit organization which operates an afterschool program for children living in a local housing authority complex. In addition, SPB participated in a fall community service project by adopting two local children from the Salvation Army Angel Tree program. New clothing, shoes, games, books, and toys for the children were collected and donated by SPB and Cary Center staff.

During the spring semester, SPB participated in a community service and educational project in which they learned about the philanthropic cycle including fundraising; researching and writing grants; presenting grant proposals; and, evaluating and awarding grant funds. Each SPB member prepared a grant proposal that represented a program or project on the Auburn University campus that could benefit from a philanthropic donation from SPB. Grant proposals were presented during a SPB meeting and members served as grantors, voting on the proposal that the group funded.

Through quality interactions with professional nonprofit leaders and hands-on educational projects, SPB members are better prepared to enter the nonprofit work force.

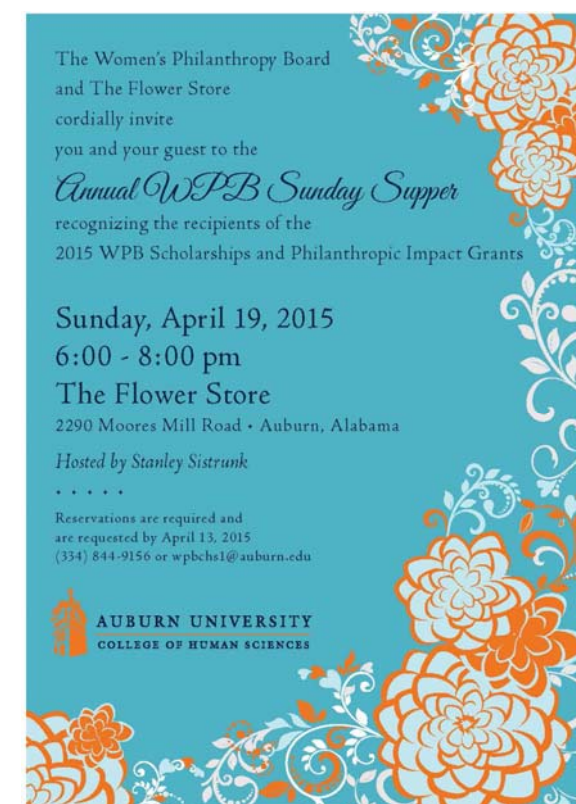
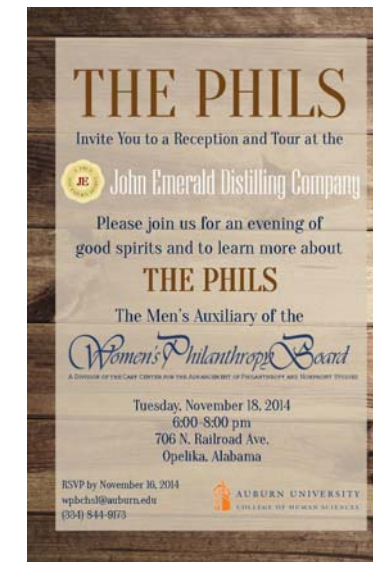


## College to Career

Established 2013

College to Career (C2C) marked its second year of providing educational sessions for university students in preparation for their transition from students to young professionals. C2C is sponsored by the College of Human Sciences Academic Affairs Office and the Women's Philanthropy Board. Sessions are taught by experts in personal or professional development topics.

This year, C2C expanded its offerings to include the College to Career Young Professionals Program, a recognition opportunity for students who complete a minimum number of C2C sessions. Upon completion, C2C Young Professionals received a recognition certificate signed by the Dean and the President of the Women's Philanthropy Board.

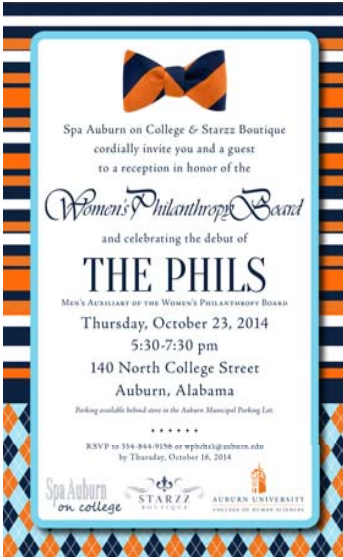




The Women's Philanthropy Board provides opportunities throughout the year for its constituents to enjoy networking events. These events provide an opportunity to connect with other like-minded philanthropic leaders and to learn more about the mission and work of the Women's Philanthropy Board, Cary Center, and College of Human Sciences.

Special thanks to Spa Auburn and Starzz Boutique for hosting the 2014 Fall Reception debuting The Phils calendar.

Special thanks to Stanley Sistrunk and The Flower Store for hosting the 2015 Sunday Supper and scholarship and programmatic grant awards ceremony.



# WPB Mentee Program

Established 2002

The WPB Mentee Program provides opportunities for students to affiliate with the organization and attend WPB educational programs. The WPB Mentee Program is available to all Auburn University students regardless of their major field of study.

WPB Mentees are invited to apply for sponsorships to attend WPB educational programs. These sponsorships are provided by individuals or the WPB general membership (when additional sponsorships are needed). Attending WPB programs exposes students to distinguished speakers and provides knowledge of important issues in financial responsibility, leadership, philanthropy, and the nonprofit arena. In addition, WPB Mentees have the opportunity to network with their sponsors and WPB donors during these programs.

This year, more than 200 Mentees attended the WPB Fall, Winter, and Spring Luncheons. Additionally, more than 350 students attended the Winter Workshop and Spring Symposium educational sessions.

WPB had a unique opportunity to expand its mentoring program this year to a special group of future philanthropists. WPB was pleased to sponsor 11 students from Opelika High School to attend the 13th Annual WPB Spring Symposium and Luncheon. These students are participating in a Philanthropy 101 course at the high school level and were excited to have the opportunity to participate in WPB's spring educational programs.



Above: Mentees at this year's WPB Luncheons



Students from Opelika High School's Philanthropy 101 class with Spring Symposium speaker, Judge Keith Watkins

### 2014-2015 C2C sessions included:

- Acing the Interview
- Dine and Dress for Success Etiquette Dinner
- Getting Into Grad School
- Budgeting: How to Create a Spending Plan
- Understanding Your First Job Offer
- Financial Planning for Young Professionals
- Effective Business Writing
- Internet Safety and Identity Theft



C2C participants receiving their Young Professionals Certificate



C2C participants at the Dine and Dress for Success Etiquette Dinner





# Fall Luncheon

The 2014 WPB Fall Luncheon was held on October 24th. Kendall Simmons, a former Auburn University and NFL football player, and his wife, Celesta, served as keynote speakers and used their platform to encourage others to make a philanthropic impact. Kendall, diagnosed with diabetes during his second year of his professional football career, found his philanthropic passion because of his diagnosis. Both Kendall and Celesta credited their parents for instilling in them the importance of giving back to the community, a trait they encourage their four children to embrace.



Kendall Simmons, Celesta Simmons, and Hans van der Reijden

# Special Guest Lecture



On November 21, 2014 WPB partnered with the Samuel Ginn College of Engineering's 100 Women Strong organization to offer a guest lecture featuring Letita Long, former director of the National Geo-Spatial Intelligence Agency. Ms. Long shared her thoughts on

leadership and women in government and national security.

# Winter Workshop & Luncheon

The 2015 WPB Winter Workshop and Luncheon was held on Tuesday, February 24th. While each of the speakers revealed a unique set of circumstances in their presentations, the resounding theme of the day was that hard work, good partnerships, a little luck, and a lot of laughter are the keys to successful entrepreneurship.



Workshop panelists: Stacy Brown, Nonet Reese, Tricia Peterson, Karen Snyder, and Samantha Bradshaw

Luncheon keynote speaker, Jennifer Walsh shared her experiences in building and surviving adversities in her business, and how volunteering with Hurricane Sandy relief inspired her to create her newest company, Pride & Glory. Jennifer also gifted the audience with Auburn University branded Pride & Glory products including lotions, hand soaps, and shower gels.



Charlotte Gaston, Jennifer Walsh, and June Henton

# 13th Annual Spring Symposium & Luncheon



June Henton, Anna Buckner, and Sid James Nakhjavan

The 13th Annual WPB Spring Symposium and Luncheon was held on Monday, April 20th and featured three outstanding leaders. Anna Buckner, a noted estate planning attorney, opened the morning symposium with an overview of the importance of developing a comprehensive planning team to help identify and carry out estate planning needs.

Judge Keith Watkins, Chief Justice of the US District Court, Middle District of Alabama, served as the Symposium keynote speaker and energized attendees with his address about Americans and civic engagement.



June Henton, Judge Keith Watkins, and Sid James Nakhjavan



Charlotte Gaston and Trudy Cathy White

Trudy Cathy White, daughter of Chick-fil-A founder Truett Cathy, served as the luncheon keynote speaker. Trudy shared stories from her time as the youngest Chick-fil-A store operator and her thoughts on corporate and nonprofit leadership. And, perhaps her strongest piece of advice fits in both leadership roles- "If you help enough other people get what they want out of life, you will get exactly what you want out of life."

More than 70 Auburn University students and 11 Opelika High School students were sponsored to attend the Spring Symposium and Luncheon. Students are sponsored to attend through individual sponsorships and through WPB's general operating funds. Providing opportunities for students to attend WPB's educational programs is just one way WPB achieves its mission to *mentor future generations of philanthropists*.

# 2015 WPB Roundtable Series

## Personal Safety Thursday, June 25th

**LIVE  
LIFE  
SAFE**

- Physical Safety
- Protecting Children
- Home and Travel Safety
- Internet Safety
- Identity Theft Protection
- Financial Safety



Presented by:  
**Corporal Pamela Revels**  
Corporal of the School  
Resource and Training Division  
Lee County Sheriff's Office

## Longevity and Retirement Risk:

*Why social security benefits should be analyzed as a major retirement asset*  
**Tuesday, July 28th**

### Worried about outliving your nest egg?

Living longer is a blessing, but it's also expensive. It's common for people to live 20-30 years in retirement. Will your retirement savings be enough? What can you do now to ensure your nest egg will endure for your whole life? How can you use social security benefits to maximize your retirement income?

Presented by:



**Brenda Dozier, Ph.D.**  
Financial Consultant  
Strategic Wealth, LLC.



**Leah Dubberly, CFP®, CDFA®TM**  
Financial Advisor  
Valorum Wealth Management, UBS